

DATA AND SURVEILLANCE



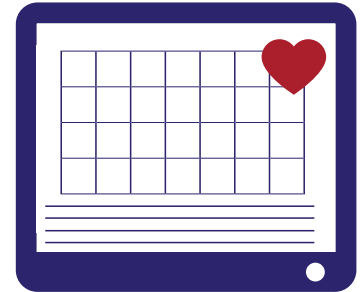
RURAL HEALTH

Transformation Center

From 2009 to 2018, the Minneapolis Heart Institute Foundation® (MHIF) conducted real-world population health research with Hearts Beat Back: The Heart of New Ulm Project (HONU) in rural New Ulm, Minn. HONU is an award-winning population health initiative that MHIF originally designed in partnership with key community partners, including New Ulm Medical Center, as a 10-year demonstration project to identify and deliver the best interventions to reduce heart disease and its risk factors at a population level. The project continues in New Ulm today as a community-owned health initiative.

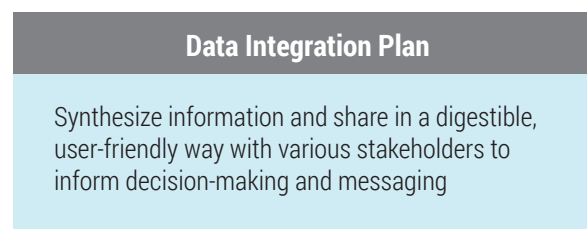
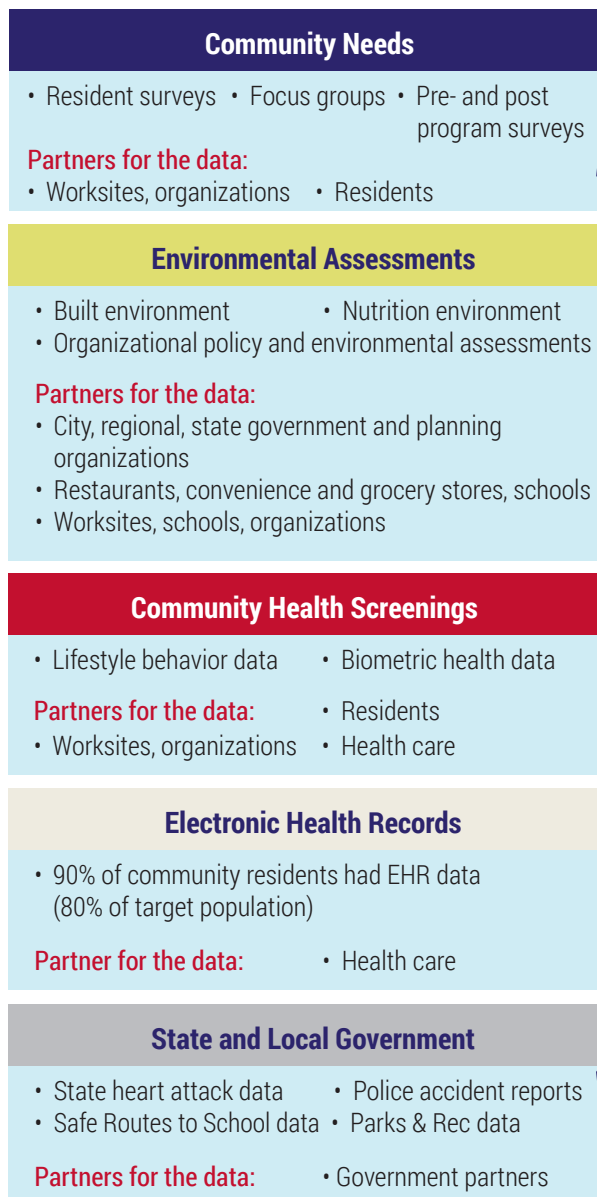
THE IMPACT OF DATA

Utilization of data was essential for The Heart of New Ulm Project's success, and it required the involvement of several key partners with access to data. A close partnership with Allina Health's New Ulm Medical Center allowed the project to access electronic health record (EHR) data, which MHIF Rural Health Transformation Center (RHTC) staff used as the primary surveillance tool.



From the onset of the project, the RHTC team leveraged this data to diagnose the community, prioritize strategies, and inform the development of key activities, monitor progress and evaluate impact. The team analyzed and translated this health data differently for dissemination to different target audiences.

In addition to EHR data, the project used telephone surveys, pre- and post-surveys for all programs, and data collected by the local and state health departments.



OUR PUBLISHED RESEARCH ON THE USE OF EHR DATA AND HEALTH SCREENINGS

Exploring Electronic Health Records as a Population Health Surveillance Tool of Cardiovascular Disease Risk Factors (2014)

Sidebottom AC, Johnson PJ, VanWormer JJ, Sillah A, Winden TJ, Boucher JL. Population Health Management. 2015; 18 (2): 79-85. doi.org/10.1089/pop.2014.0058

The Heart of New Ulm Project: Using Community-Based Cardiometabolic Risk Factor Screenings in a Rural Population Health Improvement Initiative (2012)

VanWormer JJ, Johnson PJ, Pereira RF, Boucher JL, Britt HR, Stephens CW, Thygeson NM, Graham KJ. Population Health Management. June 2012; 15(3): 135-143. doi.org/10.1089/pop.2011.0027

Cardiovascular Risk Factor Screening Satisfaction in the Heart of New Ulm Project (2012)

Bekwelem W, VanWormer JJ, Boucher JL, Pereira RF. Clinical Medicine & Research, 2012. 10(1): 1-6. doi.org/10.3121/cmr.2011.1011

Methods of Using Electronic Health Records for Population-Level Surveillance of Coronary Heart Disease Risk in the Heart of New Ulm Project (2010)

VanWormer JJ. Diabetes Spectrum. July 2010; 23(3): 161-165. doi.org/10.2337/diaspect.23.3.161

About The Minneapolis Heart Institute Foundation's Community Rural Health Consulting Team

The Minneapolis Heart Institute Foundation® is a research and education foundation that aims to create a world without heart and vascular disease. With more than 20 years of experience, our team is passionate about sharing our real-world experience and expertise to improve health in rural communities.



We are experts in:

- Using local data to inform interventions, drive and measure outcomes
- Building community capacity to address the unique needs of rural communities
- Facilitating diverse partnerships
- Executing integrated, proven strategies across the social-ecological model
- Branding and the use of communications as a primary strategy

Our Vision

To simplify and accelerate rural community health improvement efforts for sustainability and impact.

Connect with Us

Email: populationhealth@mhif.org

Phone: 785-806-2210

Web: mplsheart.org/rhtc



[Twitter.com/PopHealthMHIF](https://twitter.com/PopHealthMHIF)



[LinkedIn.com/showcase/mhifpopulationhealth](https://www.linkedin.com/showcase/mhifpopulationhealth)



Creating a world without heart and vascular disease

920 East 28th Street, Suite 100, Minneapolis, MN 55407