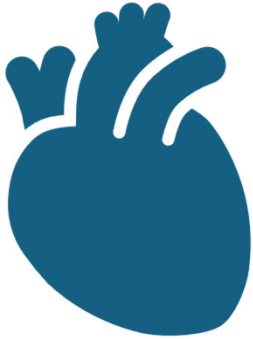




1

A solid dark blue silhouette of a heart, showing the major vessels at the top.

## The Augmented Cardiologist

What artificial intelligence can do for your patients, your workflow, and your team

Siu-Hin Wan, MD, MBA  
FACC, FAHA, FHFSA  
Director of Heart Failure, United Hospital  
Allina Health Minneapolis Heart Institute  
December 8, 2025

2

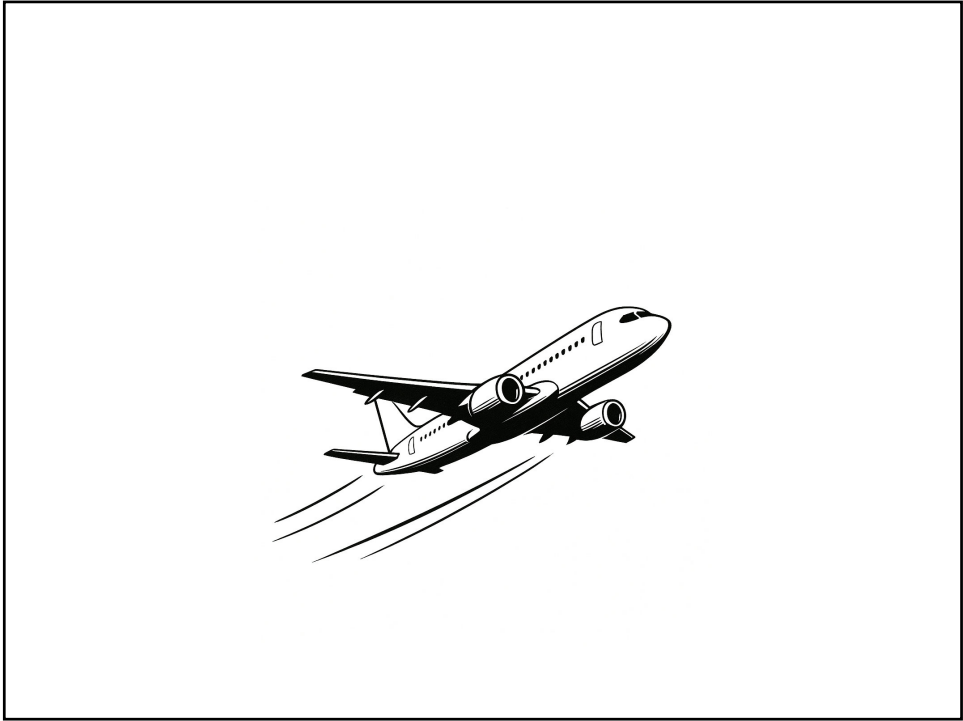
Disclosures

None

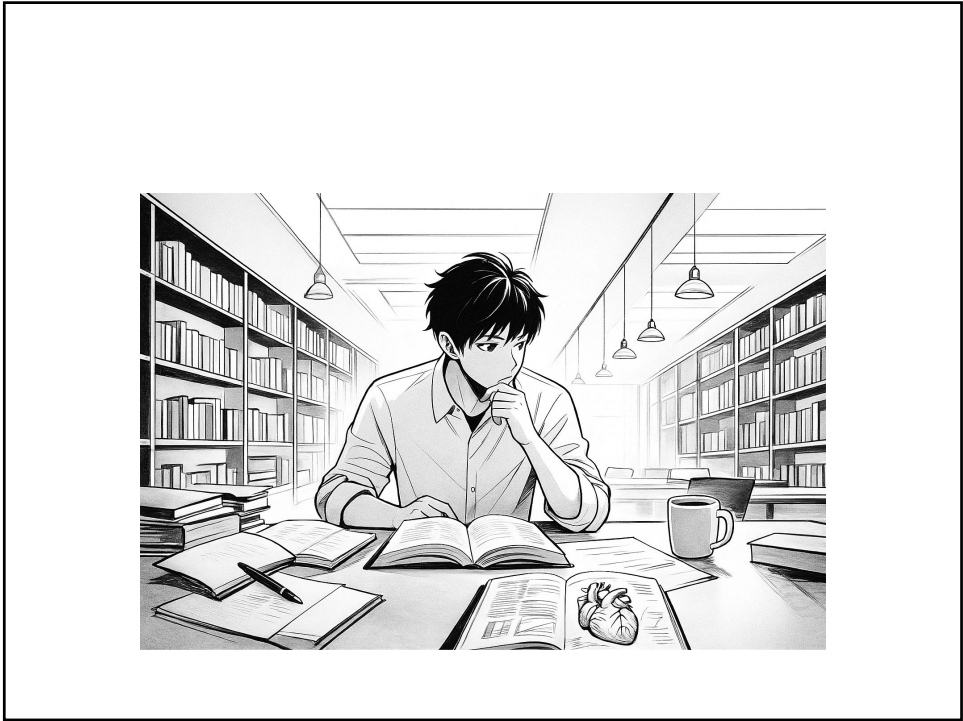
3



4



5

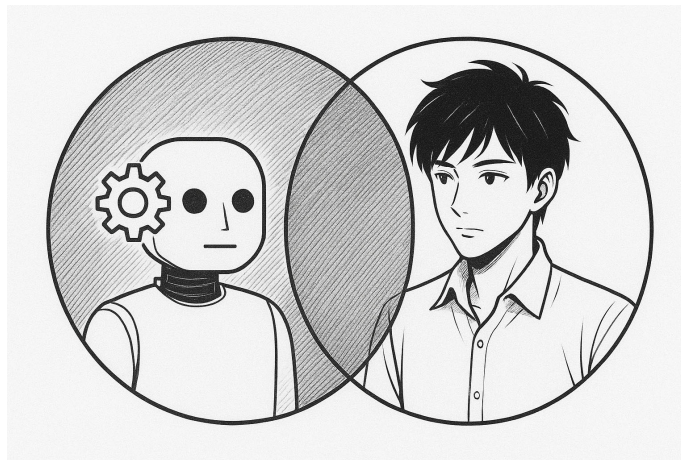


6

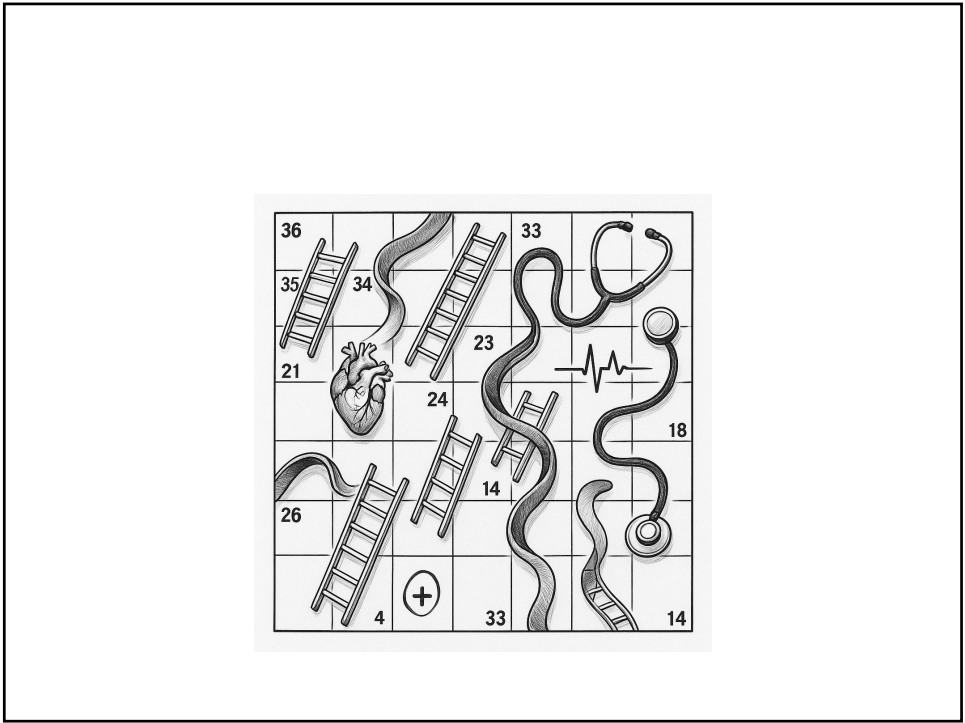
## Objectives

- 1. Identify current artificial intelligence (AI) applications in cardiology that offer real value**
- 2. Analyze common bottlenecks in the cardiovascular patient journey**
- 3. Recognize opportunities to integrate AI into clinical workflows**

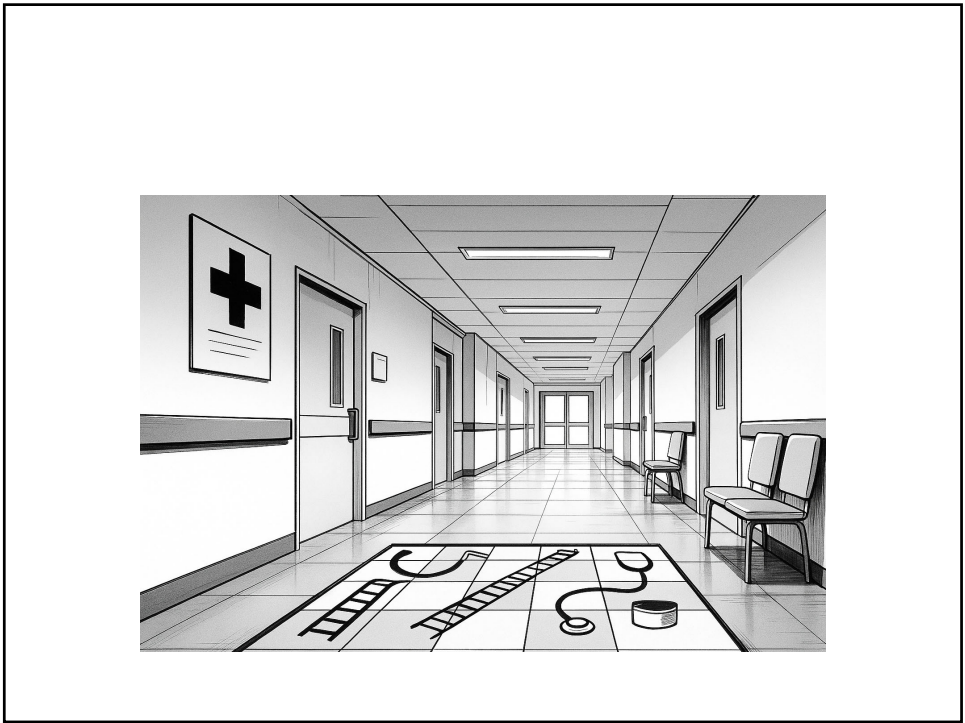
7



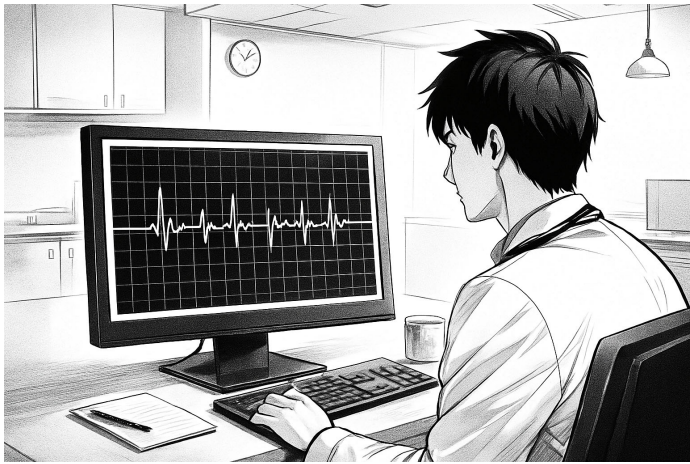
8



9



10



11

JOURNAL OF THE AMERICAN COLLEGE OF CARDIOLOGY  
© 2018 BY THE AMERICAN COLLEGE OF CARDIOLOGY FOUNDATION  
PUBLISHED BY ELSEVIER

VOL. 72, NO. 4, 2018

FELLOWS-IN-TRAINING & EARLY CAREER PAGE

Future of Quantitative Echocardiography  
for Trainees

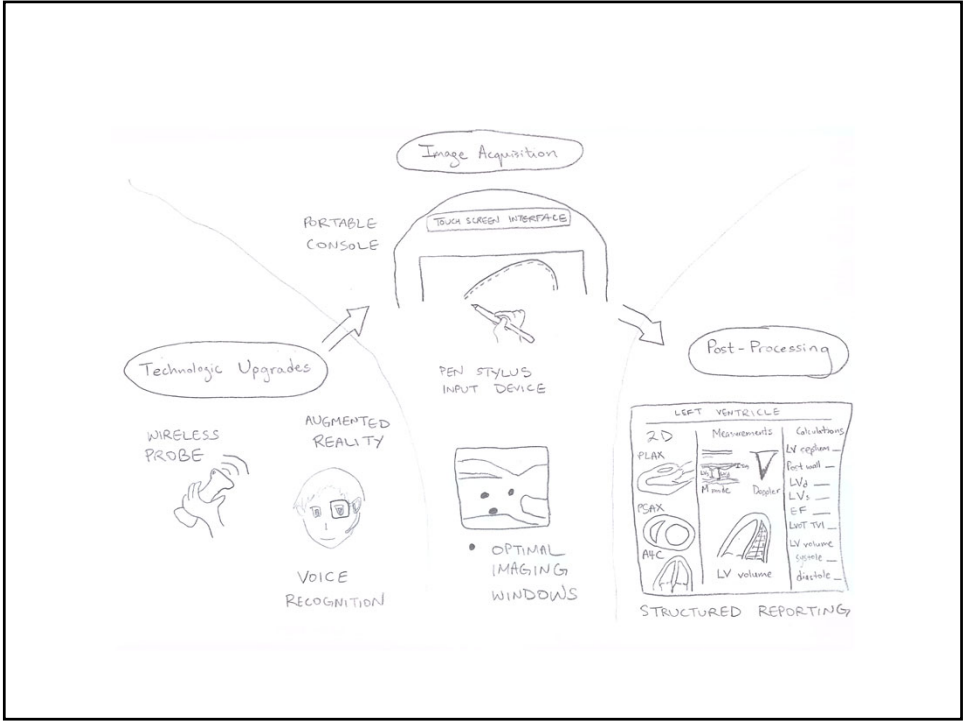
Precision, Efficiency, and Other Lessons in Ergonomics

Siu-Hin Wan, MD

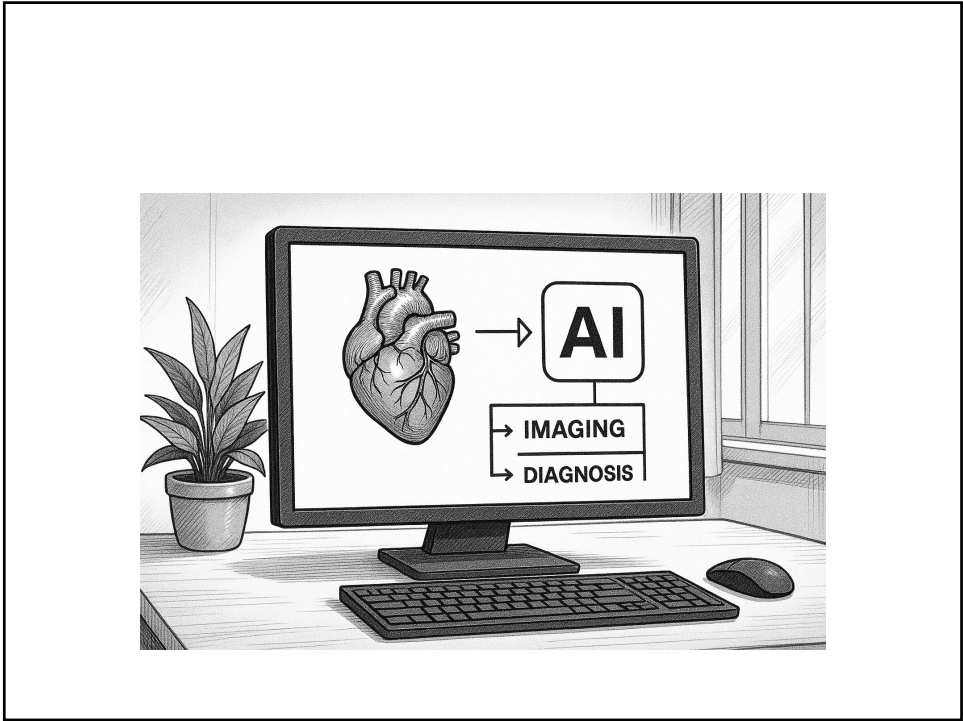
RESPONSE: What Will Echocardiography  
Look Like in the Future?

Vera H. Rigolin, MD  
Northwestern University Feinberg School of Medicine, Bluhm Cardiovascular Institute, Chicago, Illinois;  
and Immediate Past President, American Society of Echocardiography  
E-mail: [vrigolin@nm.org](mailto:vrigolin@nm.org)  
Twitter: [@RigolinVera](https://twitter.com/RigolinVera), [@NorthwesternMed](https://twitter.com/NorthwesternMed), [@NUFeinbergMed](https://twitter.com/NUFeinbergMed), [@NMcardiology](https://twitter.com/NMcardiology), [@ASE360](https://twitter.com/ASE360)

12

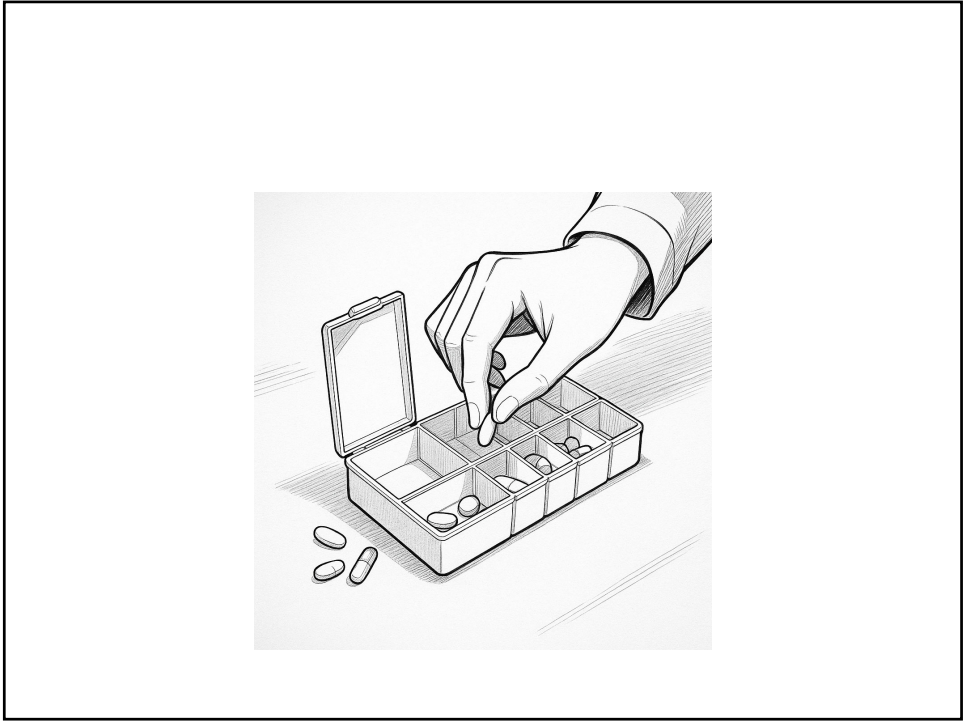


13

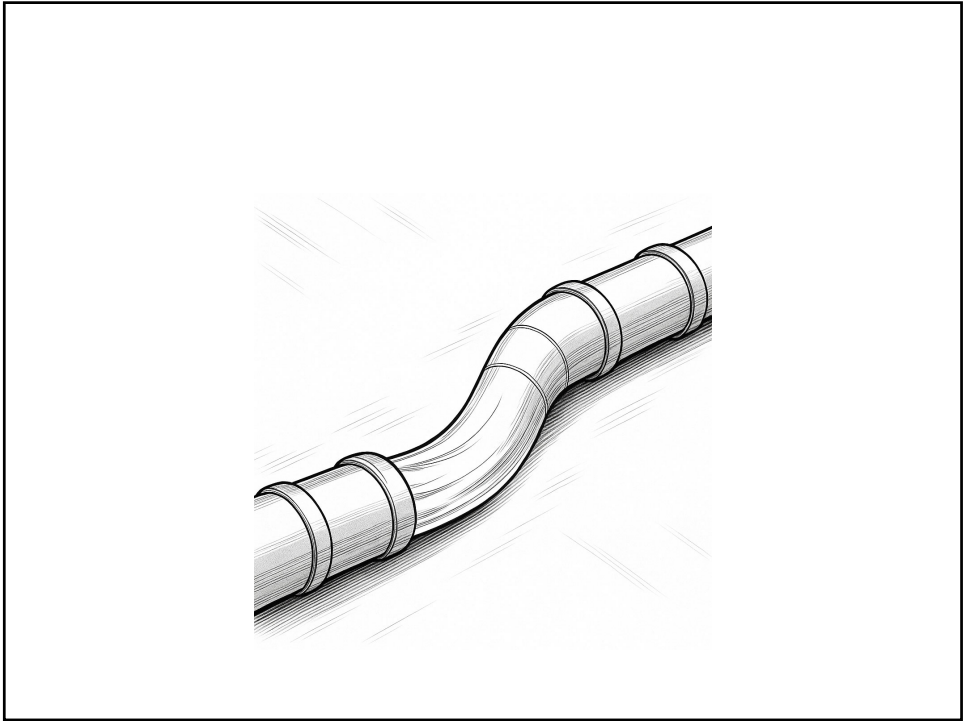


14





15



16





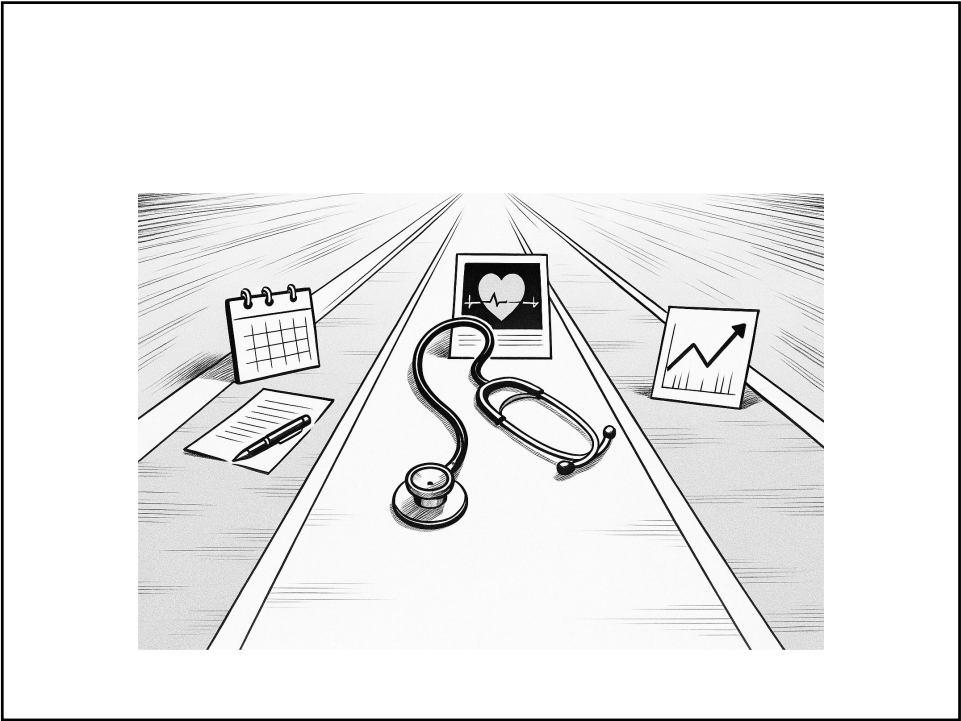
17



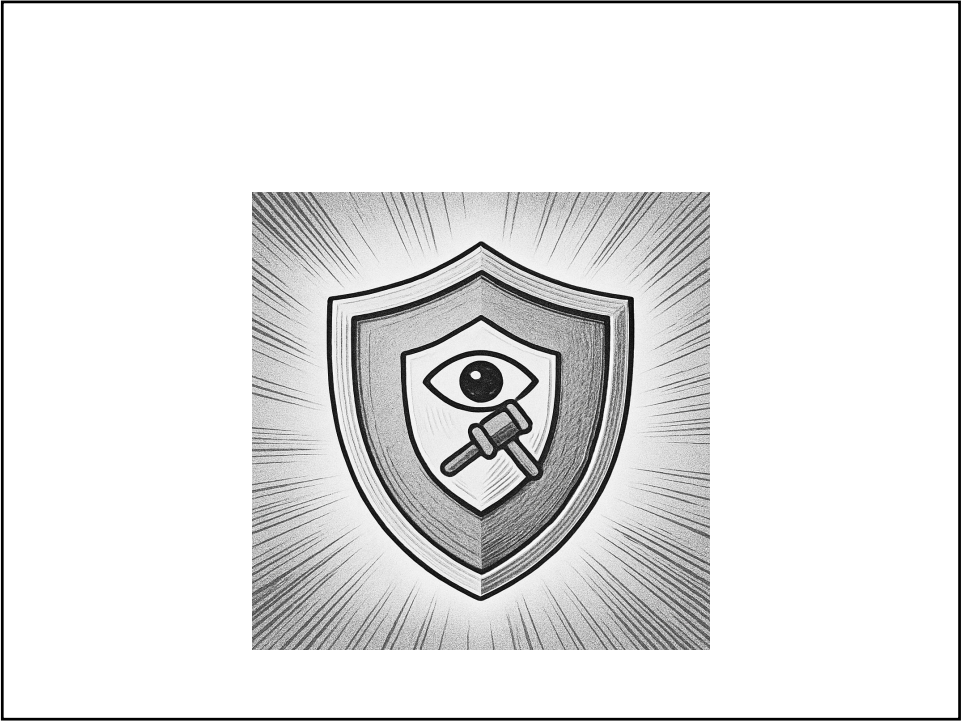
18



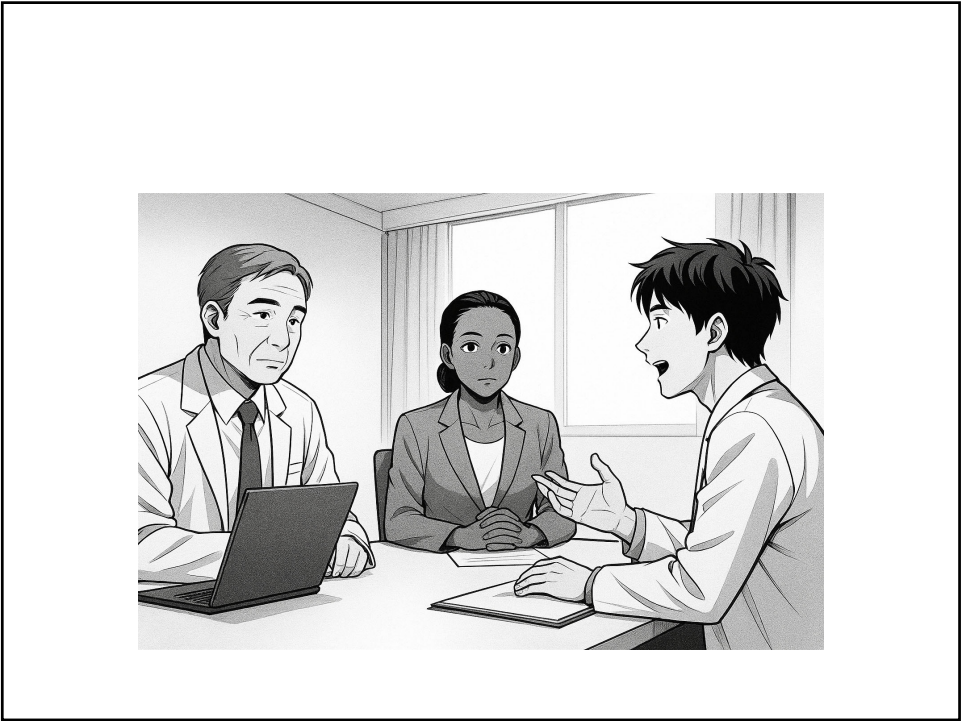
19



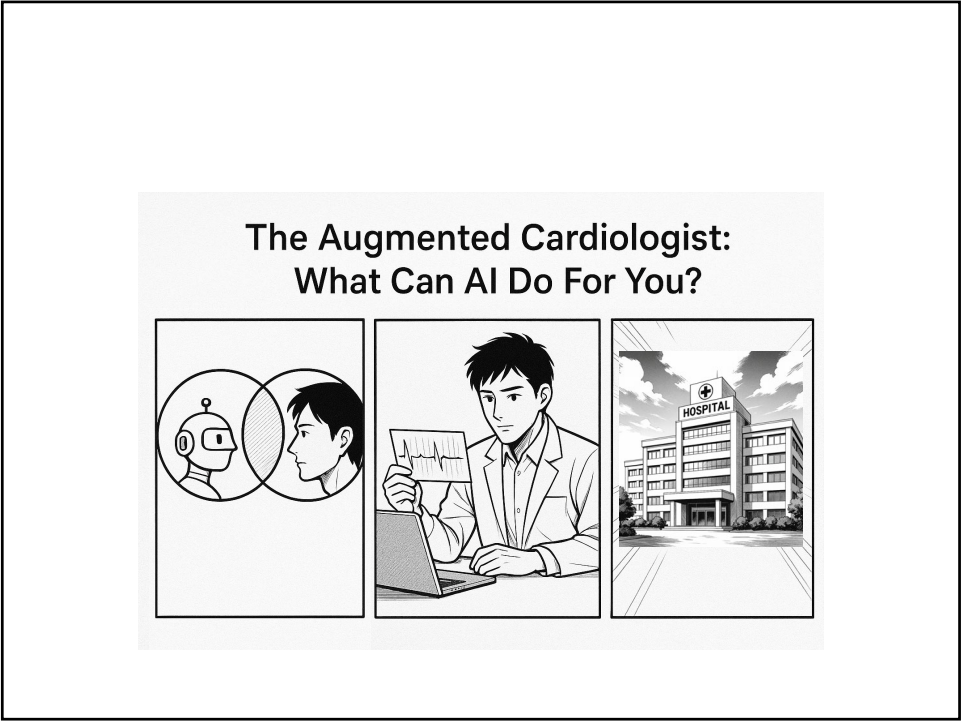
20



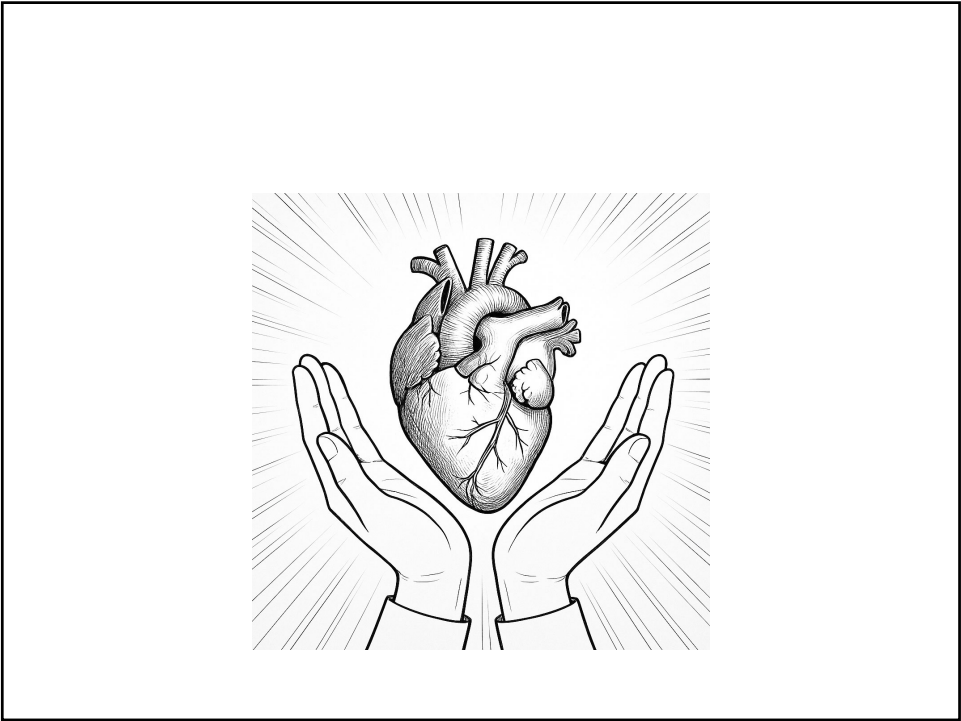
21



22



23



24

Questions

Siu-Hin.Wan@allina.com