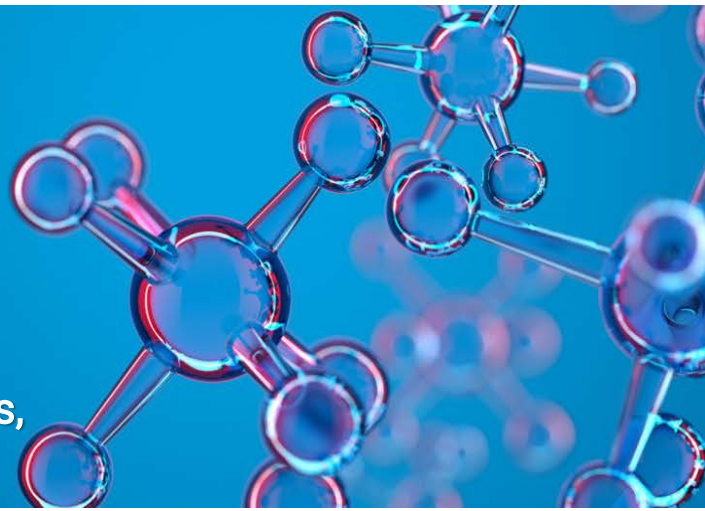


## 2022 Howard B. Burchell Memorial Lecture

### Heart Failure with an Improved Left Ventricular Ejection Fraction: Mechanics, Models and Management



#### **Speaker: Douglas L. Mann, MD**

Aida L. Steinger Professor of Cardiology  
Professor of Medicine, Cell Biology and Physiology  
Washington University School of Medicine  
St. Louis, MO

#### **Learning Objectives**

At the completion of this activity, the participants should be able to:

- Describe patients with heart failure with an improved left ventricular ejection fraction (HFimpEF).
- Describe the natural history of patients with HFimpEF.
- Identify the appropriate management strategies for HFimpEF patients.

### Minneapolis Heart Institute Foundation Cardiovascular Grand Rounds

**Date:** April 17, 2023 | **Time:** 7:00 – 8:00 AM

**Location:** Minneapolis Heart Institute Foundation Learning Center  
920 E 28<sup>th</sup> Street, Suite 100 | Minneapolis, MN | 55407

**Webinar:** Please attend via webcast: <https://zoom.us/j/438383016> or at [mplsheart.org/gr](https://mplsheart.org/gr)

**Dial in number:** Dial: 929-205-6099 Webinar ID: 438-383-016 (phone-in is anonymous and you will not receive CME credit)

### About: Dr. Howard B. Burchell



Howard B. Burchell, MD, was born in Athens, Ontario, Canada. He received his medical degree from the University of Toronto in 1932. He continued his training at Toronto General Hospital, the University of Pittsburgh, the Mayo Graduate School, and the London Hospital Medical School and Heart Hospital in England. After World War II, during which Dr. Burchell served in the U.S. Army Medical Corps, he returned to the Mayo Clinic as a consultant, ultimately becoming Professor of Medicine. In 1968, Dr. Burchell was appointed Chief in Cardiology at the University of Minnesota Medical School, a position he held until his official retirement in 1975.

After retirement, Dr. Burchell was Professor Emeritus of Medicine and an active participant in the medical academic life of the Minneapolis/St. Paul community. He received several professional honors both during his career and after retirement. Today he is widely recognized as one of the foremost authorities in cardiology during the 1950s and 1960s. He is considered to have set the stage, with his colleagues, for the ablation of accessory AV connections, which ultimately led to the current era of interventional cardiac electrophysiology. The annual Burchell lecture is a tradition that was created over twenty years ago as a way to honor Dr. Burchell and his contributions to the world of medicine.